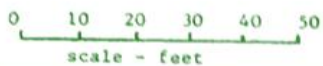


CAUSLAND PARK Tree Inventory

prepared for ANACORTES PARKS & RECREATION, January, 1990

by Eg Kromann, Ruth Kromann, and Tracy Powell

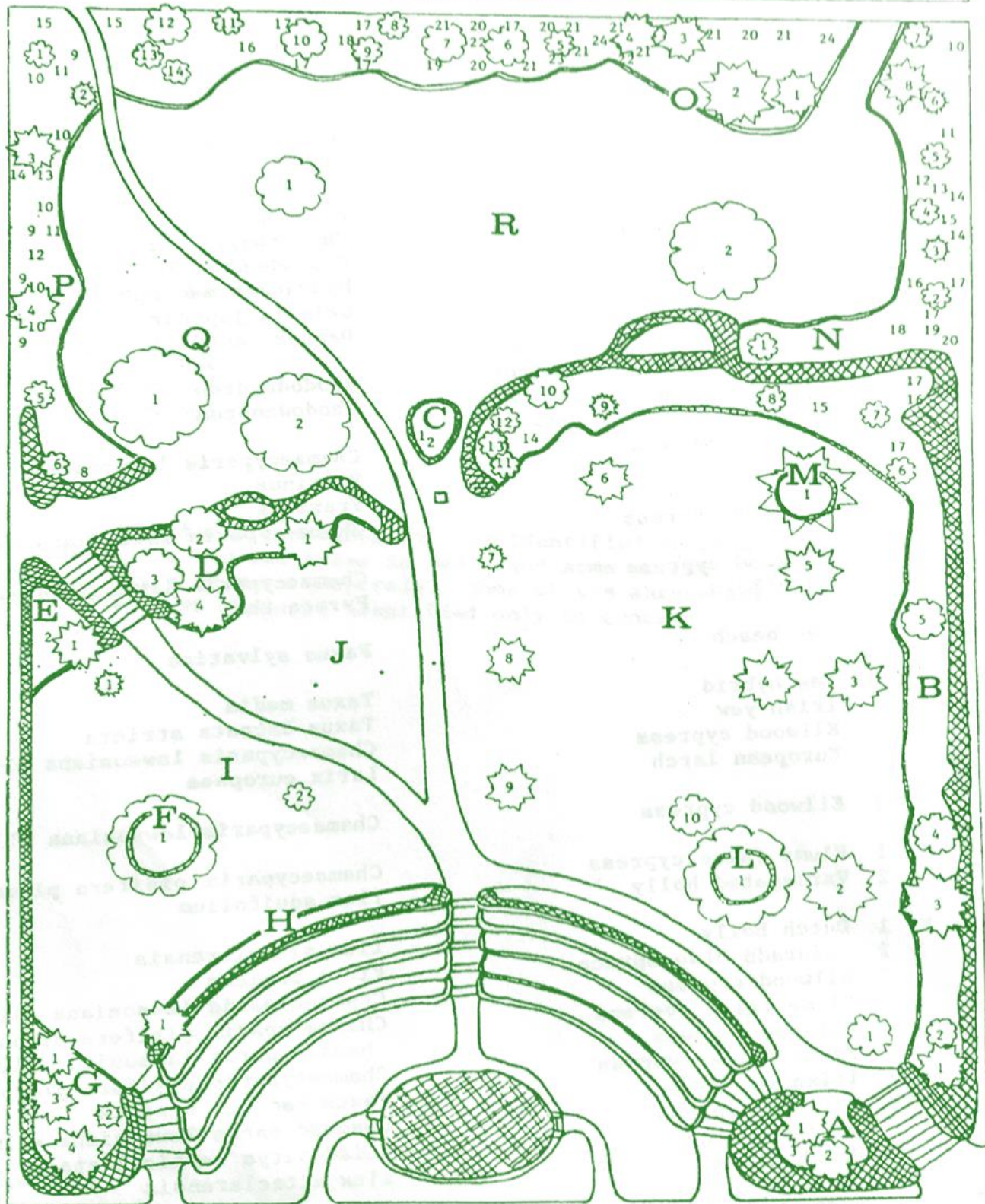
under a grant from Washington Dept. of Natural Resources



M Avenue

Eighth Street

Seventh Street



CAUSLAND PARK TREE INVENTORY

	No.	Common name	Latin name
Bed A	1	Ellwood cypress	<i>Chamaecyparis lawsoniana ellwoodii</i>
	2	Red cutleaf maple	<i>Acer palmatum</i>
	3	Rhododendron	<i>Rhododendron</i>
Bed B	1	Ellwood cypress	<i>Chamaecyparis lawsoniana ellwoodii</i>
	2	Lilac	<i>Syringa vulgaris</i>
	3	Monkey puzzle tree	<i>Araucaria araucana</i>
	4	Cutleaf maple	<i>Acer palmatum</i>
	5	Cutleaf maple	<i>Acer palmatum</i>
	6	Variegated holly	<i>Ilex aquifolium</i>
	7	Dutch holly	<i>Ilex altaclarensis</i>
	8	Variegated holly	<i>Ilex aquifolium</i>
	9	Ponderosa pine	<i>Pinus ponderosa</i>
	10	Cutleaf maple	<i>Acer palmatum</i>
	11	Laceleaf maple	<i>Acer palmatum</i>
	12	Laceleaf maple	<i>Acer palmatum</i>
	13	Flowering quince	<i>Chaenomeles cardinal</i>
	14	Rhododendron	<i>Rhododendron</i>
	15	Hydrangea	<i>Hydrangea macrophylla</i>
	16	Skimmia	<i>Skimmia japonica</i>
	17	Daphne	<i>Daphne laureola</i>
Bed C	1	Rhododendron	<i>Rhododendron</i>
	2	Rhododendron	<i>Rhododendron</i>
Bed D	1	Lawson cypress	<i>Chamaecyparis lawsoniana</i>
	2	Ash	<i>Fraxinus</i>
	3	Ash	<i>Fraxinus</i>
	4	Ellwood cypress	<i>Chamaecyparis lawsoniana ellwoodii</i>
Bed E	1	Ellwood cypress	<i>Chamaecyparis lawsoniana ellwoodii</i>
	2	Firethorn	<i>Pyracantha</i>
Bed F	1	Red beech	<i>Fagus sylvatica</i>
Bed G	1	Yew hybrid	<i>Taxus media</i>
	2	Irish yew	<i>Taxus baccata stricta</i>
	3	Ellwood cypress	<i>Chamaecyparis lawsoniana ellwoodii</i>
	4	European larch	<i>Larix europaea</i>
Bed H	1	Ellwood cypress	<i>Chamaecyparis lawsoniana ellwoodii</i>
Lawn I	1	Plume false cypress	<i>Chamaecyparis pisifera plumosa</i>
	2	Variegated holly	<i>Ilex aquifolium</i>
Lawn K	1	Dutch holly	<i>Ilex altaclarensis</i>
	2	Colorado blue spruce	<i>Picea pungens</i>
	3	Ellwood cypress	<i>Chamaecyparis lawsoniana ellwoodii</i>
	4	Plume false cypress	<i>Chamaecyparis pisifera plumosa</i>
	5	Ellwood cypress	<i>Chamaecyparis lawsoniana ellwoodii</i>
	6	Plume false cypress	<i>Chamaecyparis pisifera plumosa</i>
	7	Irish yew	<i>Taxus baccata stricta</i>
	8	Ellwood cypress	<i>Chamaecyparis lawsoniana ellwoodii</i>
	9	Umbrella pine	<i>Sciadopitys verticillata</i>
	10	Dutch holly	<i>Ilex altaclarensis</i>
Bed L	1	Black walnut	<i>Juglans nigra</i>

Bed P	1	Flowering cherry	Prunus
	2	Juniper	Juniperus communis
	3	Yew	Taxus media
	4	Yew	Taxus media
	5	Flowering cherry	Prunus subhirtella autumnalis
	6	Goldenchain tree	Laburnum watereri
	7	Skimmia	Skimmia japonica
	8	Rhododendron	Rhododendron
	9	Heather	Erica
	10	Dwarf pine	Pinus densiflora pendula
	11	Mugo pine	Pinus mugo
	12	Forsythia	Forsythia spectabilis
	13	Evergreen azalea	Rhododendron
	14	Daphne	Daphne laureola
	15	Juniper, golden pfitzer	Juniperus chinensis pfitzerana aurea
Lawn Q	1	English elm	Ulmus procera
	2	European beech	Fagus sylvatica
Lawn R	1	Flowering cherry	Prunus
	2	European beech	Fagus sylvatica
Lawn S	1	English walnut	Juglans regia
	2	English walnut	Juglans regia
	3	English walnut	Juglans regia
	4	English walnut	Juglans regia

Note: All trees are numbered individually, and identified at least to the specie level, except for the two Ashes in Bed D and some of the flowering Prunus of whose identity we were uncertain. Some of the shrubs are numbered in groups, and many of them are identified only to genus.

